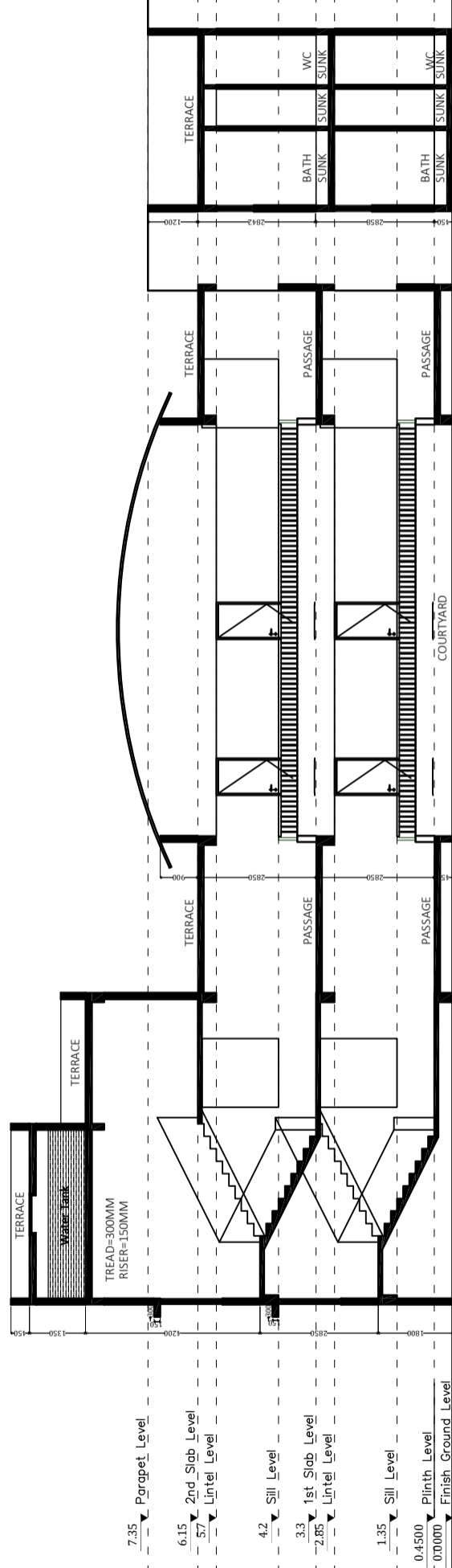


- 7.35 Parapet Level
- 6.15 2nd Slab Level
- 5.7 Lintel Level
- 4.2 Sill Level
- 3.3 1st Slab Level
- 2.85 Lintel Level
- 1.35 Sill Level
- 0.4500 Plinth Level
- 0.0000 Finish Ground Level

SECTION @B-B



- 7.35 Parapet Level
- 6.15 2nd Slab Level
- 5.7 Lintel Level
- 4.2 Sill Level
- 3.3 1st Slab Level
- 2.85 Lintel Level
- 1.35 Sill Level
- 0.4500 Plinth Level
- 0.0000 Finish Ground Level

SECTION @A-A